

Copper and Brass Plated Steel Pigtail Connectors

Type PT

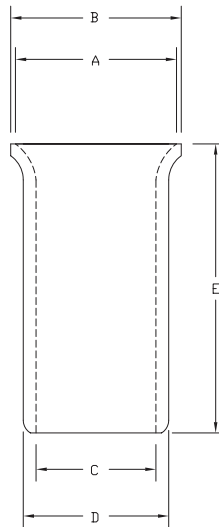
Copper Pigtail Connectors

- Manufactured from seamless copper tube for excellent electrical and mechanical performance

Brass Plated Steel Pigtail Connectors

- Manufactured from malleable steel tubing with brass plating for a quality low resistance connection

- Designed to accommodate a wide range of copper conductor sizes and combinations
- Funneled barrel design allows for easy cable insertion
- Crimp design provides a permanent non-reversible connection



CATALOG NUMBER	CONNECTOR MATERIAL	COPPER CONDUCTOR RANGE (AWG)	APPROXIMATE DIMENSIONS (IN.)					INSTALLATION TOOL
			A	B	C	D	E	
PT-1810	Copper	18-10	.26	.29	.20	.24	.37	HTC-1808
PT-1408	Copper	14-8	.34	.36	.25	.31	.61	
PT-1810S	Brass Plated Steel	18-10	.26	.29	.20	.24	.37	
PT-1408S	Brass Plated Steel	14-8	.34	.36	.25	.31	.61	

See page 96 for pigtail connector crimping tool HTC-1808